

# Follow up from HWB Workshop

# The workshop conclusions

- Strong willingness but long way to go
- Interface between NHS and wider LAs at two fronts:
  - Hospital
  - Community
- Hospital interface work (DtOC/BCF etc) already started
- Need to do more on neighbourhood level integration
- Need to align HWBB with emerging ICS/ICP
- Agreed that a small T&F group will meet to take back proposals to HWB Board and ICS Board

The model, Offer and Ask...

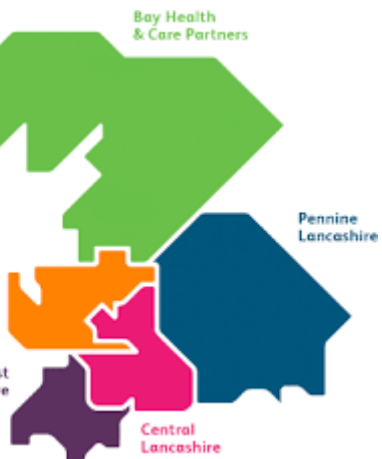
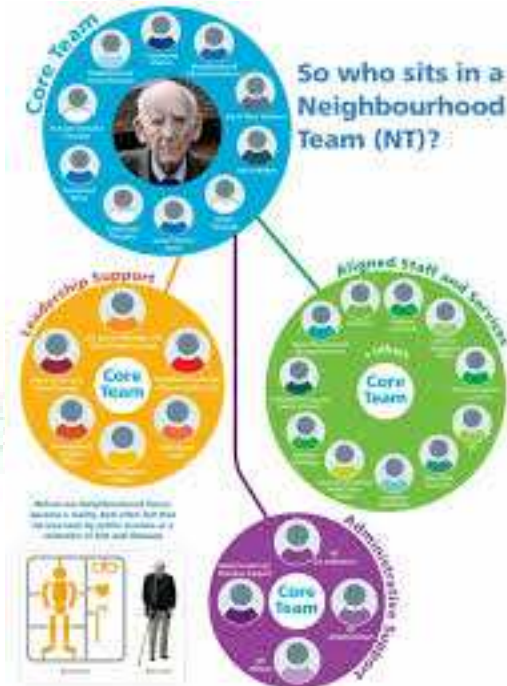
# Neighbourhood Operating Model

# What Is a Neighbourhood?

depends who you ask.....



My neighbourhood



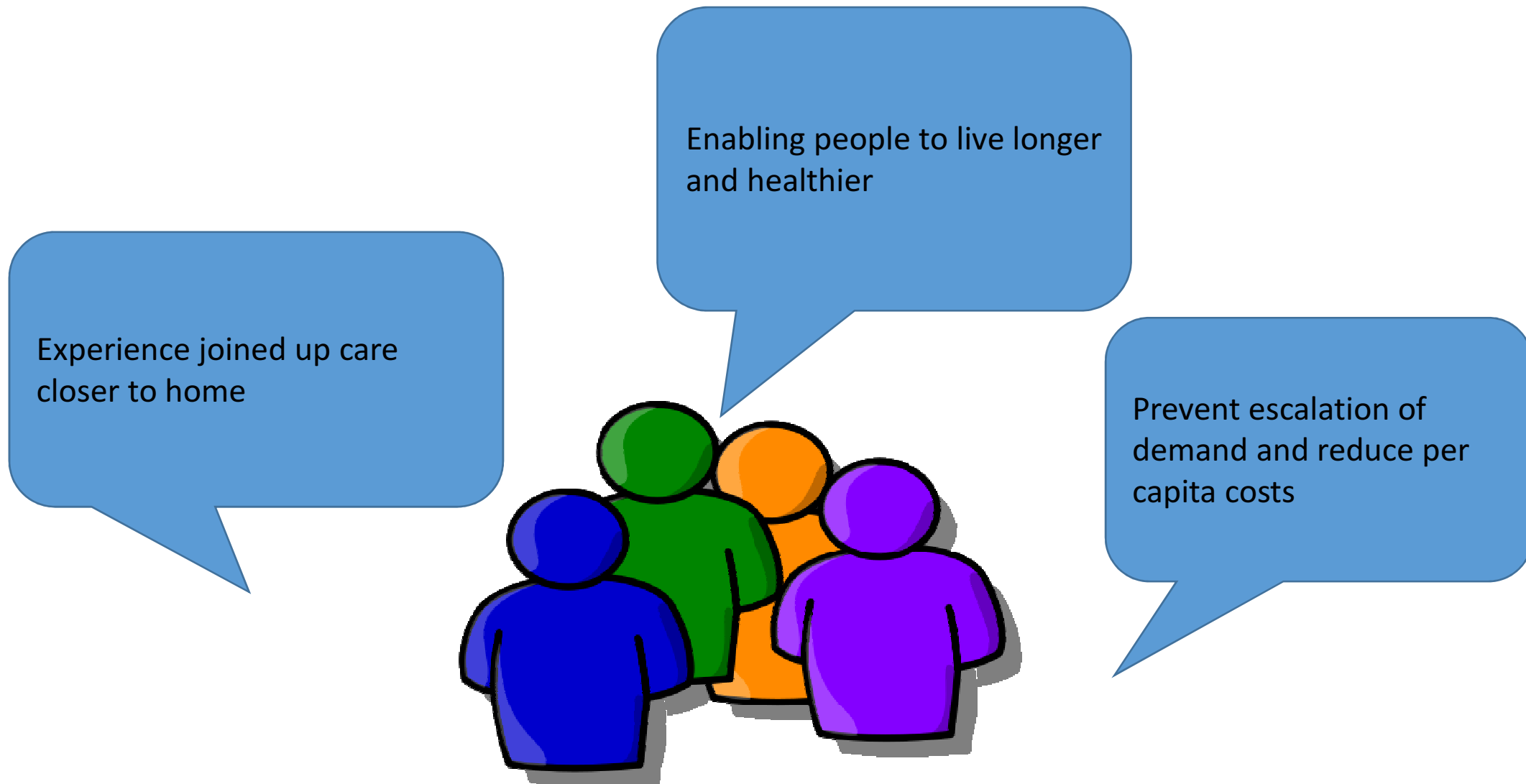
# Neighbourhood care model for Health and Wellbeing



## Our operating definition fo neighbourhoods

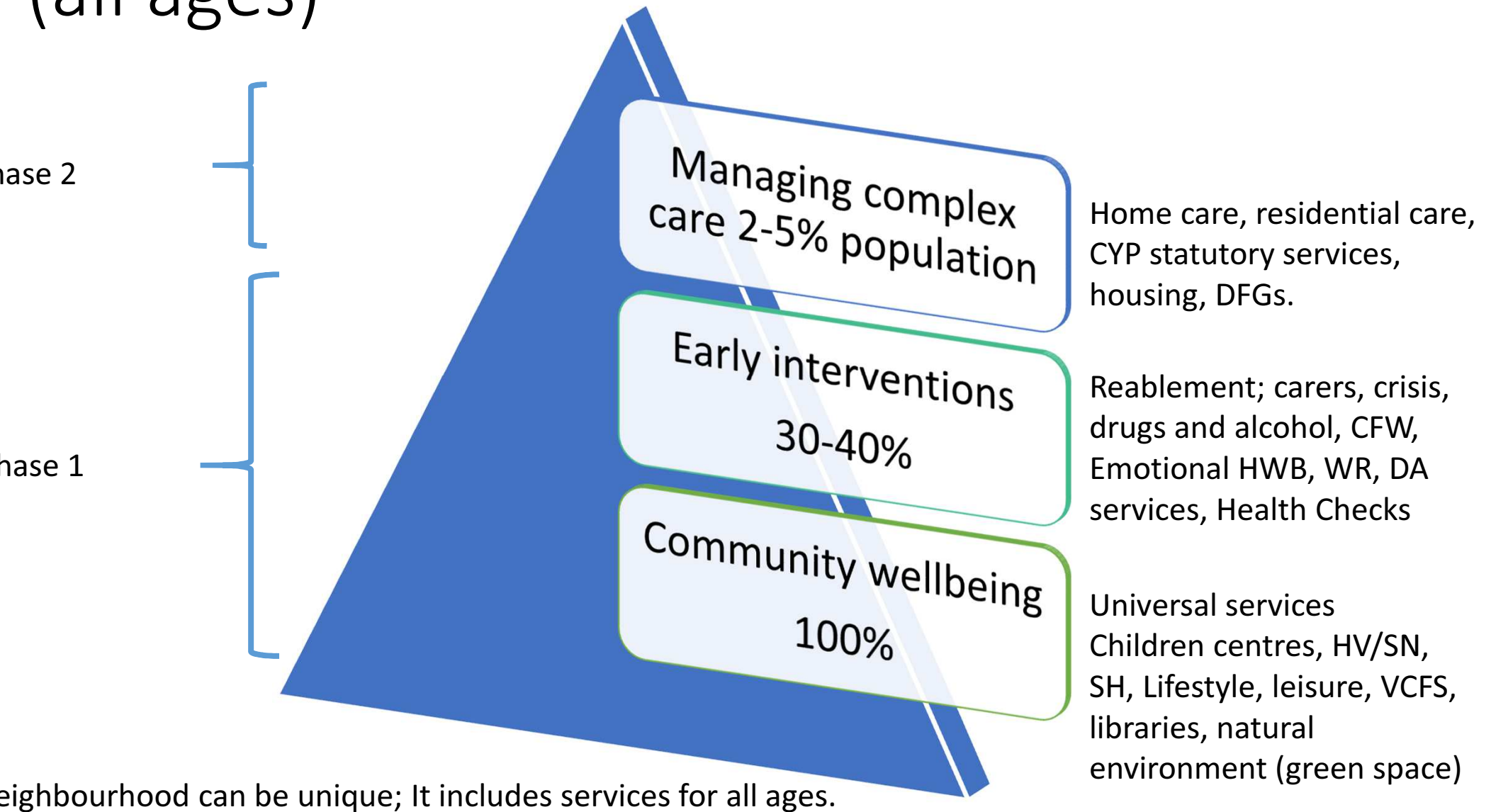
- It is the emerging 41 primary care networks and associated education settings
- More or less aligned to CCG service planning areas
- All contained within district council boundaries
- Need to address both registered and resident population

# proposed vision





# Local authority services for whole population (all ages)





# Total Neighbourhoods – Offer

- Operationally align ‘all’ our community based services to primary care networks/localities and associated education settings
  - Two work programmes – HWB services and adult social care services
  - Identify resources ‘attached’ to each neighbourhood(s)
- Grass roots community mobilisation with VCFS
  - Social prescribing/building community resilience
  - Developing a new cadre of workforce – community health and wellbeing workers (Apprenticeship levy?)
- Bringing our influence to wider determinants of health
  - Leisure, parks, air quality, walking and cycling
  - Housing and employment

# Total Neighbourhoods – Offer

1. Support the development of alliance of Health and Wellbeing Boards across Lancashire and South Cumbria
2. We will ensure that the wider determinants of wellbeing are embedded into these neighbourhoods for long term prevention
3. Bring support from the LGA (Prevention at Scale, design council)
4. Develop an outcomes framework to measure success (based on existing indicators/dashboards).
5. Develop VCFS framework for wellbeing with districts

Note: These actions are already linked to ICS's Prevention and Population Health work stream

# Total Neighbourhoods – Ask

- The **ask** is that the rest of the health and care system commits to this being whole neighbourhood system.
- For the neighbourhoods to have a virtual control of their indicative budget, they need to demonstrate how they can achieve the triple aim - outcome, quality and sustainability.
- Facilitate the delivery of this programme via ICS (in particular Population Health, Primary Care and Out of Hospital workstreams)